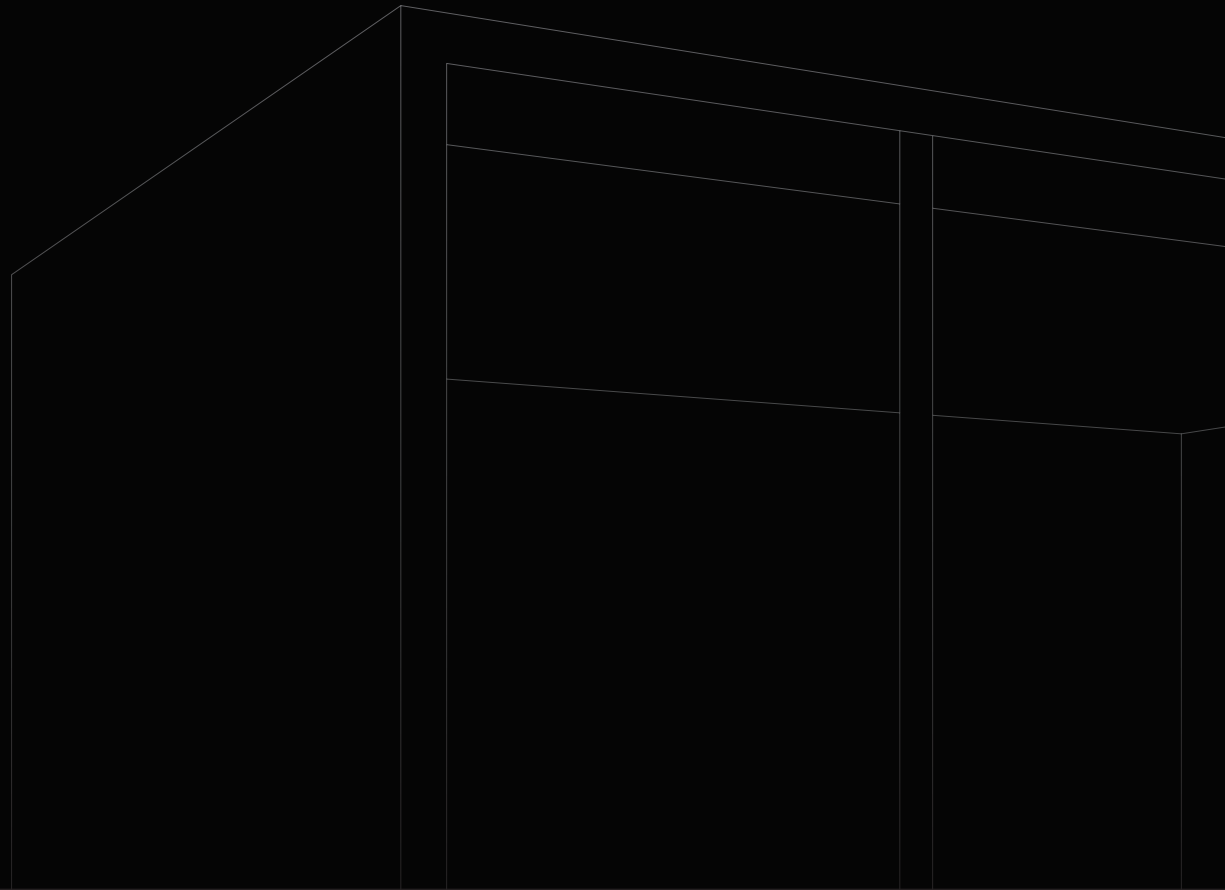


XS

PRODUCT CARD



Properties

XS		
External dimensions (WxDxH)	110×110×225cm	43.3×43.3×88.6"
Internal dimensions (WxDxH)	80×100×207cm	31.4×39.3×81.7"
Indoor area	0,8m2	8.6ft2
Weight	420kg	925lbs
Required free height of room*	240cm	94.5"
Soundproofing	Class A (ISO 23351-1)	38-42dB Rw (ISO 717)
Table	Two layer table is included. Location on right or back wall.	
Wheels	Integrated	
Laminated safety glass	10,7mm	7/16"
Door	Hinged door, right handed	
Ventilation	Continuous +20l/s	Continuous +42cfm
Ventilation fan type	Radial fan, heavy duty	
Air filtration	G4	
Lighting	VLD Antimicrobial white, 4000K LED, motion sensor	
Dimmable lighting	No	
Surface treatment	Antimicrobial nano-coating	
Usage	Long term, 24/7	
Sockets	1 x power, 1 x USB A	
Power supply	110-240 VAC / 10-16A / 50-60Hz	
Power	50W (avg) 150W (peak)	
Fire safety	UL 723: Class A-C (surface) ASTM E648: Class 1 (flooring)	
Electrical safety	IEC 60335-1:2020 UL 962 (E514776)	
Seismic safety	Special SEISMIC Certification (2019-0176-COC-01-00) International Building Code (IBC) 2018 (23.02.2021) California Building Code (CBC) 2019 (23.02.2021)	

Options

Dual RJ45 Network sockets

Additional ECOfelt matching acoustic panels with velcro fixing

Sprinkler opening

Packaging information

Crate A 2330×770×1300mm 500kg 91.7×30.3×51.2" 1100 lbs

Structure option





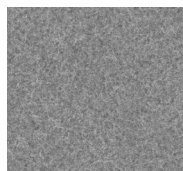
Stock finishes

Lead time is approximately 6 weeks.

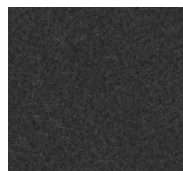
ECOfelt
90% wool, 10 recycled PET
Interior | Walls and ceiling
www.slalom-it.com



ECOfelt 955
Ghost white

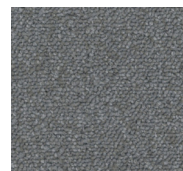


ECOfelt 953
Grey



ECOfelt 923
Dark grey

Anker Aera (Econyl SD)
100% recycled polyamide
Interior | carpet
anker.eu

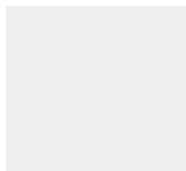


Aera 506
Grey

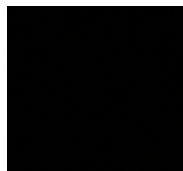


Aera 902
Dark grey

Koskisen MFC
Exterior | Wall panels
Interior | Table
koskisen.com



0502 G50Y
Snow White



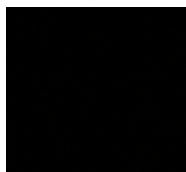
8502B
Black



H3157 ST12
Vicenza Oak
(in XS, side panels **only**)

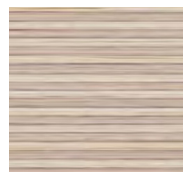
EGGER MFC (NEW 2023)
Exterior | Wall panels
egger.com

Steel
Handle and hinges



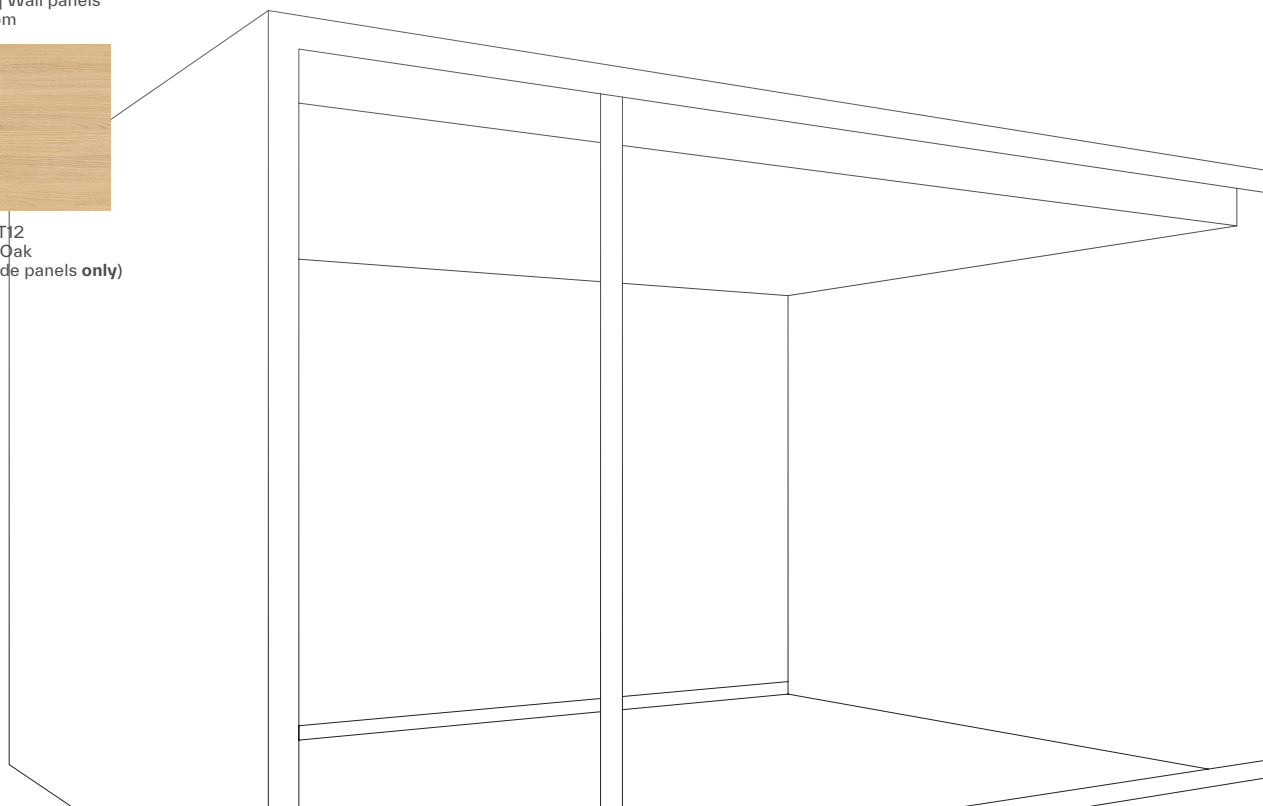
RAL 9004
Black

Plywood
Door opening edge



Birch
Natural varnish

Ask for custom finish options from your seller.





The world's most productive spaces.

Vetrospace Ltd

Office and factory

Otto Korhosen Katu 1
20660 Littoinen
Finland

Contact:

+358 400 300 772
info@vetrospace.com
www.vetrospace.com

Showroom Helsinki
Tyynenmerenkatu 5
00220 Helsinki
Finland

Showroom New York
Bisley North America
1140 Broadway Suite 902
10001, New York, USA

Showroom London
Bisley
32 Dallington Street
EC1V 0BB, London, UK

