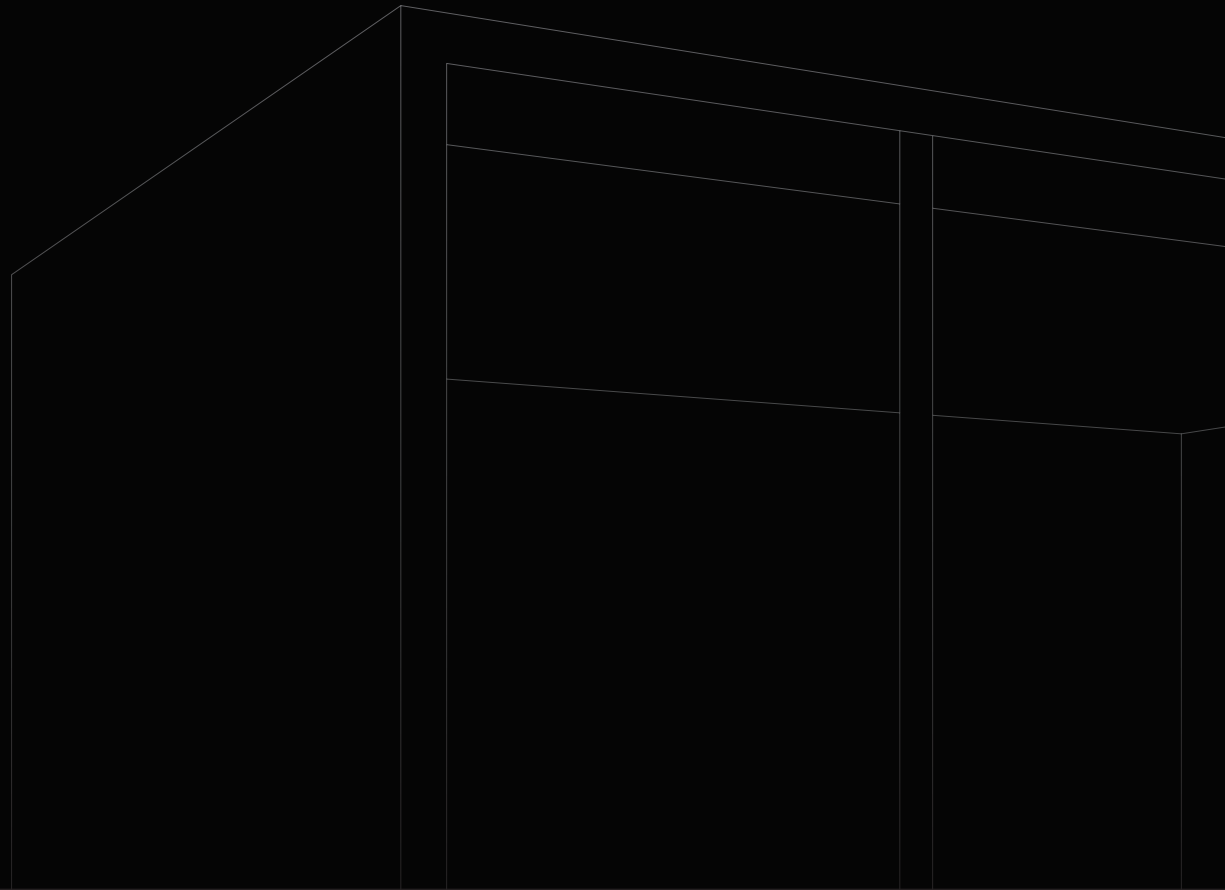


M +

PRODUCT CARD



Properties

M+		
External dimensions (WxDxH)	210×210×240cm	82.7×82.7×94.5"
Internal dimensions (WxDxH)	200×200×220cm	78.7×78.7×86.6"
Indoor area	4m ²	43ft ²
Weight	1050kg	2310lbs
Required free height of room*	250cm	98.5"
Soundproofing	Class A (ISO 23351-1)	42-46dB Rw (ISO 717)
Glass	16,7mm / 5/8" laminated	
Door	Dual panel sliding door with low threshold, left or right handed, easy access	
Ventilation	Automatic +60l/s	Automatic +125cfm
Ventilation control	Smart CO2 controller	
Ventilation fan	Radial fan, heavy duty	
Air filtration	G4 & HEPA H 13 (ISO-7 level IAQ)	
Lighting	Antimicrobial Spectral blue and white 4000K	
Dimmable lighting	Yes	
Surface treatment	Antimicrobial nano-coating	
Usage	Long term, 24/7	
Sockets	4 x power, 2 x USB A, 2 x RJ45	
Power supply	110-240 VAC / 10-16A / 50-60Hz	
Power	70W (avg) 300W (peak)	
Fire safety	UL 723: Class A-C (surface) ASTM E648: Class 1 (flooring)	
Electrical safety	IEC 60335-1:2020 UL 962 (E514776)	
Seismic safety	Special SEISMIC Certification (2019-0176-COC-01-00) International Building Code (IBC) 2018 (23.02.2021) California Building Code (CBC) 2019 (23.02.2021)	

* Custom size and height pods available

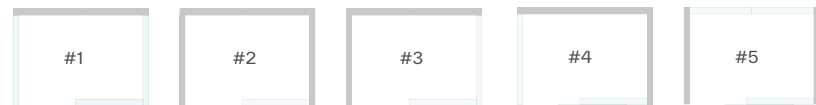
Options

- AV kit in technology panel (includes HDMI/USB/POWER/VESA BRACKET)
- AV kit in separate panel (includes HDMI/USB/POWER/VESA BRACKET)
- Cooling and heating unit with remote controller (heat pump)
- Additional sliding door
- Electromagnetic locking (can be connected to 3rd party systems)
- Door ramp pair (threshold without ramp is 15mm or 5/8")
- Additional acoustic panels with velcro fixing
- Sprinkler opening
- Privacy glass (electric dimming with remote controller)
- Integrated automatic fire extinguisher (can be connected to the main alarm system)

Packaging

Crate A	2485×770×1380mm 900kg	97.8×30.3×54.3" 1980 lbs
Crate B	2485×770×1380mm 400Kg	97.8×30.3×54.3" 880 lbs

Structure option



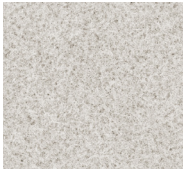
The door can be placed on any element on front wall and can be left or right handed. Ask the sales team if need to have the door on the side wall.



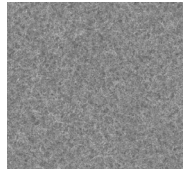
Stock finishes

Lead time approximately 6 weeks.

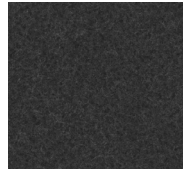
ECOfelt
90% wool, 10 recycled PET
Interior | Walls and ceiling
www.slalom-it.com



ECOfelt 955
Ghost white

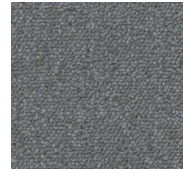


ECOfelt 953
Grey



ECOfelt 923
Dark grey

Anker Aera (Econyl SD)
100% recycled polyamide
Interior | carpet
anker.eu

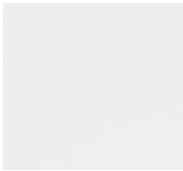


Aera 506
Grey

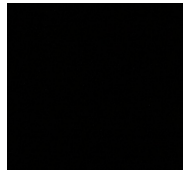


Aera 902
Dark grey

Koskisen MFC
Exterior | Wall panels
koskisen.com



0502 G50Y
Snow White



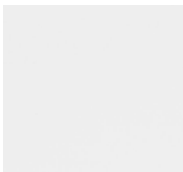
8502B
Black



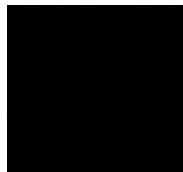
H3157 ST12
Vicenza Oak

EGGER MFC (NEW 2023)
Exterior | Wall panels
egger.com

Aluminium
Interior & Exterior | Profiles
makelaalu.fi

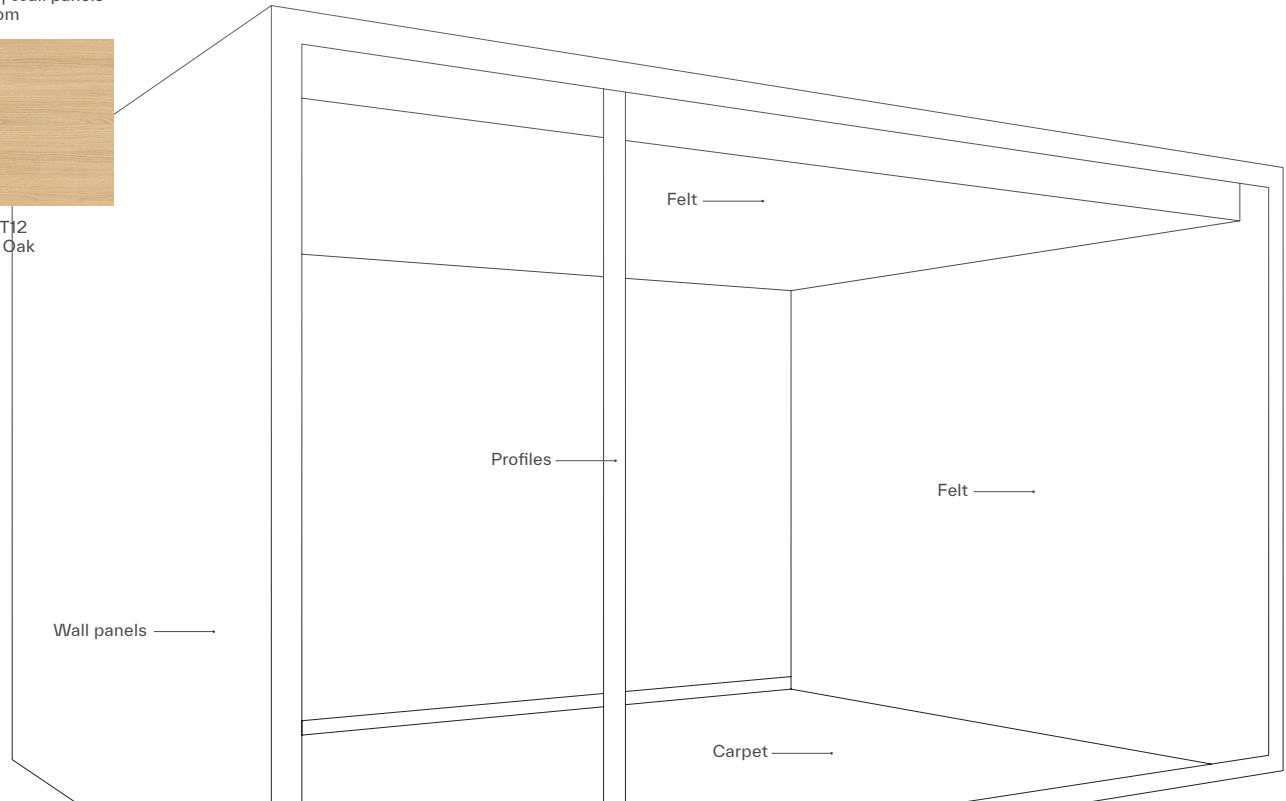


RAL 9016
White

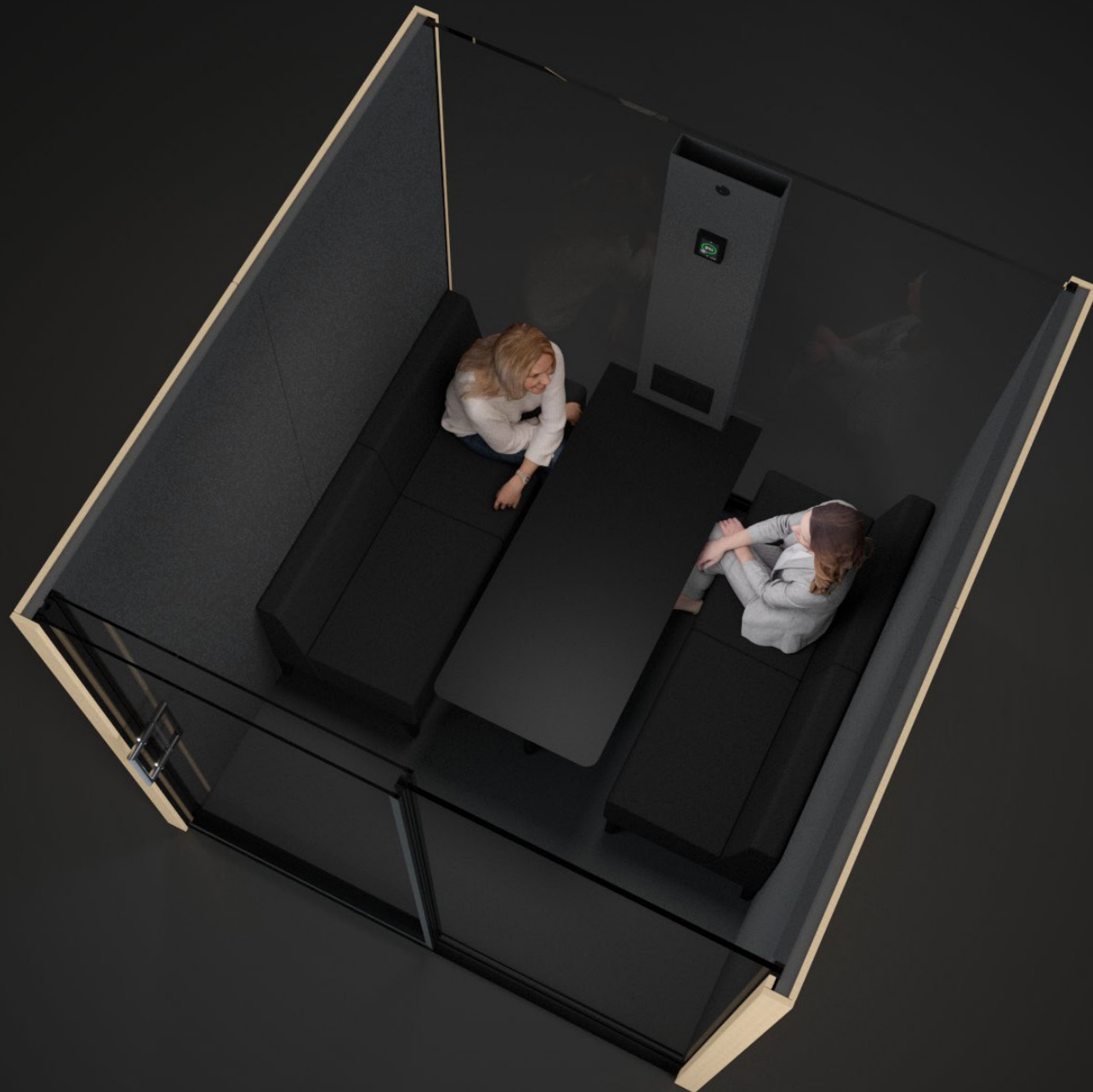


RAL 9004
Black

Ask for custom finish options from your seller.







The world's most productive spaces.

Vetrospace Ltd

Office and factory

Otto Korhosen Katu 1
20660 Littoinen
Finland

Contact:

+358 400 300 772
info@vetrospace.com
www.vetrospace.com

Showroom Helsinki
Tyynenmerenkatu 5
00220 Helsinki
Finland

Showroom New York
Bisley North America
1140 Broadway Suite 902
10001, New York, USA

Showroom London
Bisley
32 Dallington Street
EC1V 0BB, London, UK

