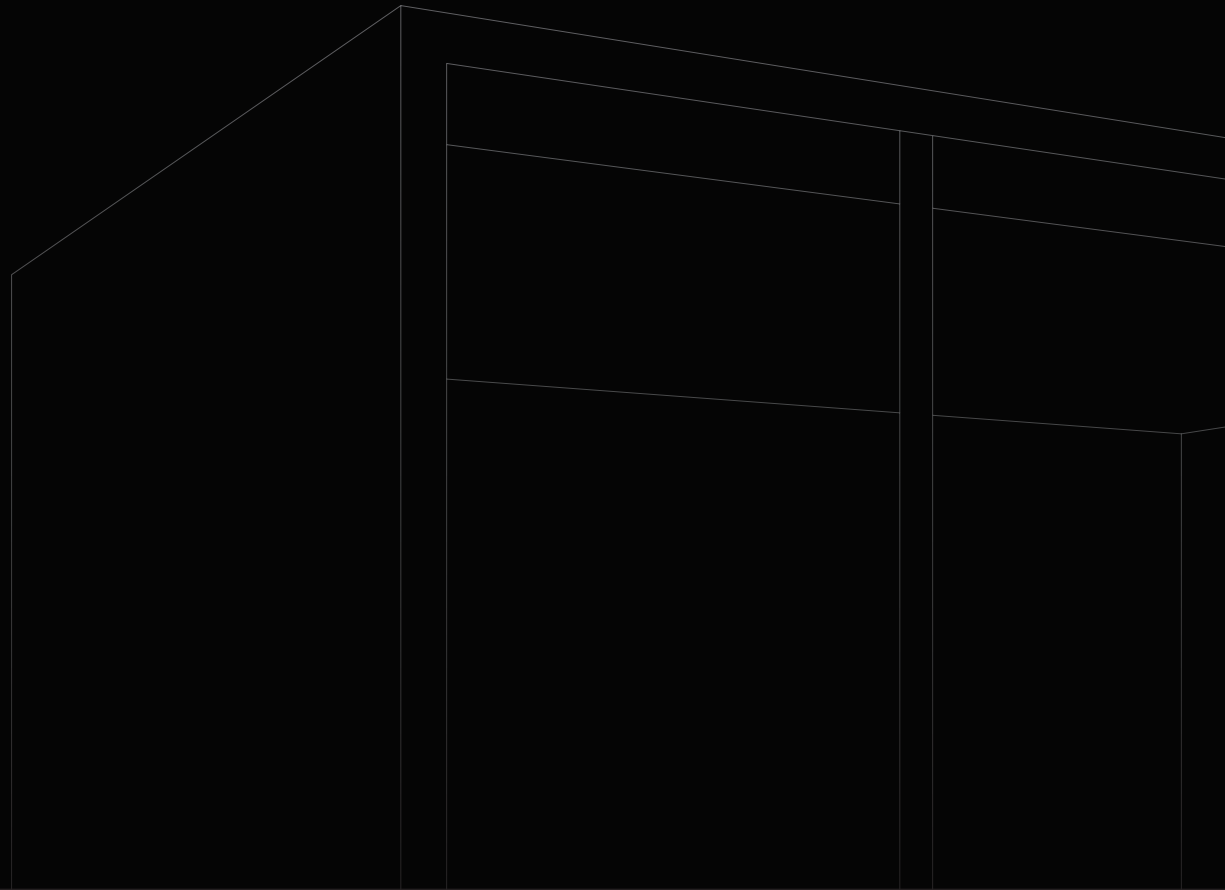


M

PRODUCT CARD



# Properties

M		
External dimensions (WxDxH)	210×160×240cm	82.7×63×94.5"
Internal dimensions (WxDxH)	200×150×220cm	78.7×59.1×86.6"
Indoor area	3m <sup>2</sup>	32ft <sup>2</sup>
Weight	900kg	1980lbs
Required free height of room*	250cm	98.5"
Soundproofing	Class A (ISO 23351-1)	42-46dB Rw (ISO 717)
Glass	16,7mm / 5/8" laminated	
Door	Dual panel sliding door with low threshold, left or right handed, easy access	
Ventilation	Automatic +60l/s	Automatic +125cfm
Ventilation control	Smart CO2 controller	
Ventilation fan	Radial fan, heavy duty	
Air filtration	G4 & HEPA H 13 (ISO-7 level IAQ)	
Lighting	Antimicrobial Spectral blue and white 4000K	
Dimmable lighting	Yes	
Surface treatment	Antimicrobial nano-coating	
Usage	Long term, 24/7	
Sockets	4 x power, 2 x USB A, 2 x RJ45	
Power supply	110-240 VAC / 10-16A / 50-60Hz	
Power	70W (avg) 300W (peak)	
Fire safety	UL 723: Class A-C (surface) ASTM E648: Class 1 (flooring)	
Electrical safety	IEC 60335-1:2020 UL 962 (E514776)	
Seismic safety	Special SEISMIC Certification (2019-0176-COC-01-00) International Building Code (IBC) 2018 (23.02.2021) California Building Code (CBC) 2019 (23.02.2021)	

\* Custom size and height pods available

Options
AV kit in technology panel (includes HDMI/USB/POWER/VESA BRACKET)
AV kit in separate panel (includes HDMI/USB/POWER/VESA BRACKET)
Cooling and heating unit with remote controller (heat pump)
Additional sliding door
Electromagnetic locking (can be connected to 3rd party systems)
Door ramp pair (threshold without ramp is 15mm or 5/8")
Additional acoustic panels with velcro fixing
Sprinkler opening
Privacy glass (electric dimming with remote controller)
Integrated automatic fire extinguisher (can be connected to the main alarm system)

Packaging		
Crate A	2485×770×1380mm 800kg	97.8×30.3×54.3" 1760 lbs
Crate B	2485×770×1380mm 350Kg	97.8×30.3×54.3" 770 lbs



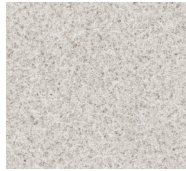
The door can be placed on any element on front wall and can be left or right handed. Ask the sales team if need to have the door on the side wall.



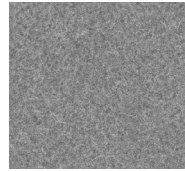
# Stock finishes

Lead time approximately 6 weeks.

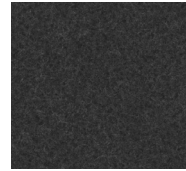
ECOfelt  
90% wool, 10 recycled PET  
Interior | Walls and ceiling  
[www.slalom-it.com](http://www.slalom-it.com)



ECOfelt 955  
Ghost white

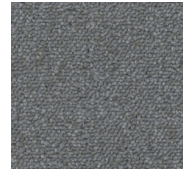


ECOfelt 953  
Grey

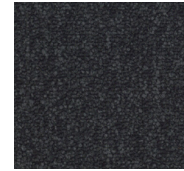


ECOfelt 923  
Dark grey

Anker Aera (Econyl SD)  
100% recycled polyamide  
Interior | carpet  
[anker.eu](http://anker.eu)

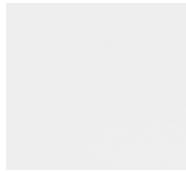


Aera 506  
Grey

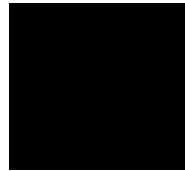


Aera 902  
Dark grey

Koskisen MFC  
Exterior | Wall panels  
[koskisen.com](http://koskisen.com)



0502 G50Y  
Snow White



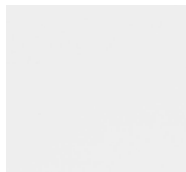
8502B  
Black



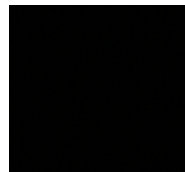
H3157 ST12  
Vicenza Oak

EGGER MFC (NEW 2023)  
Exterior | Wall panels  
[egger.com](http://egger.com)

Aluminium  
Interior & Exterior | Profiles  
[makelaalu.fi](http://makelaalu.fi)

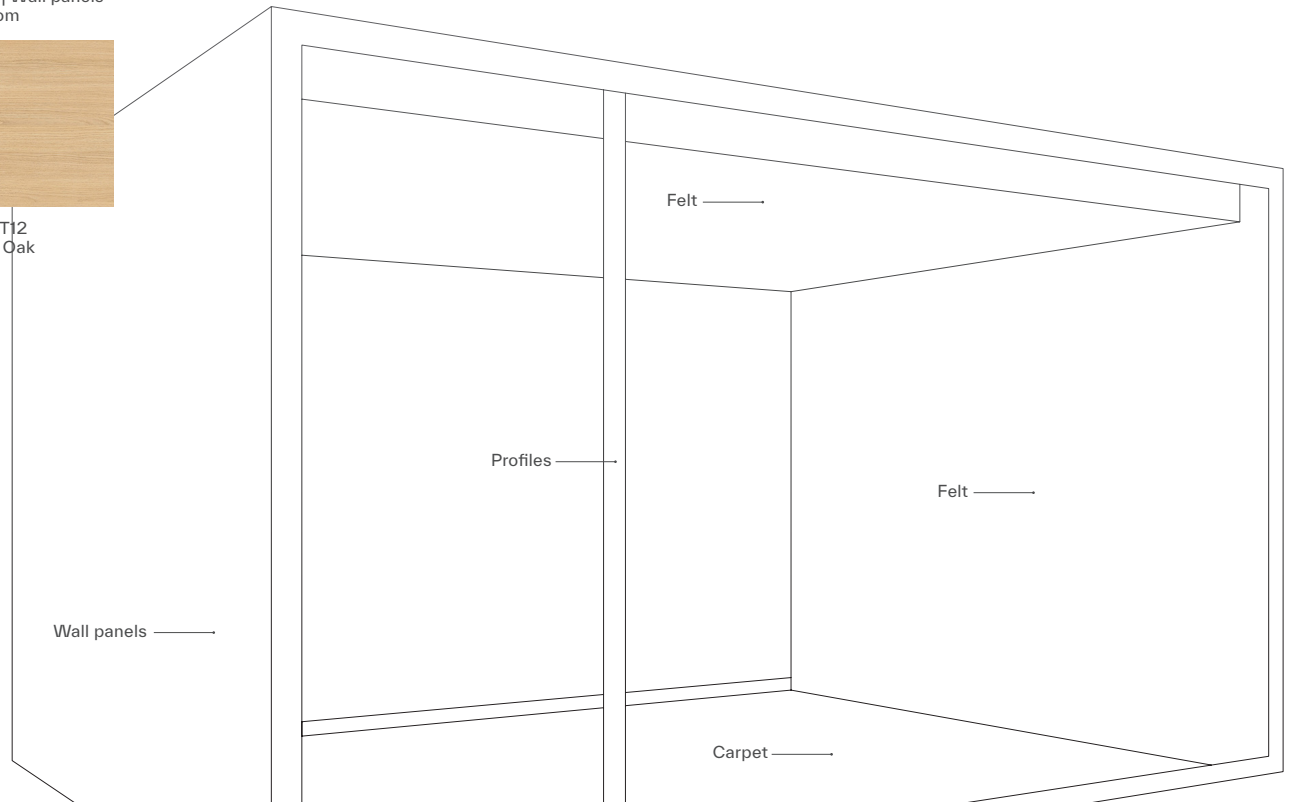


RAL 9016  
White

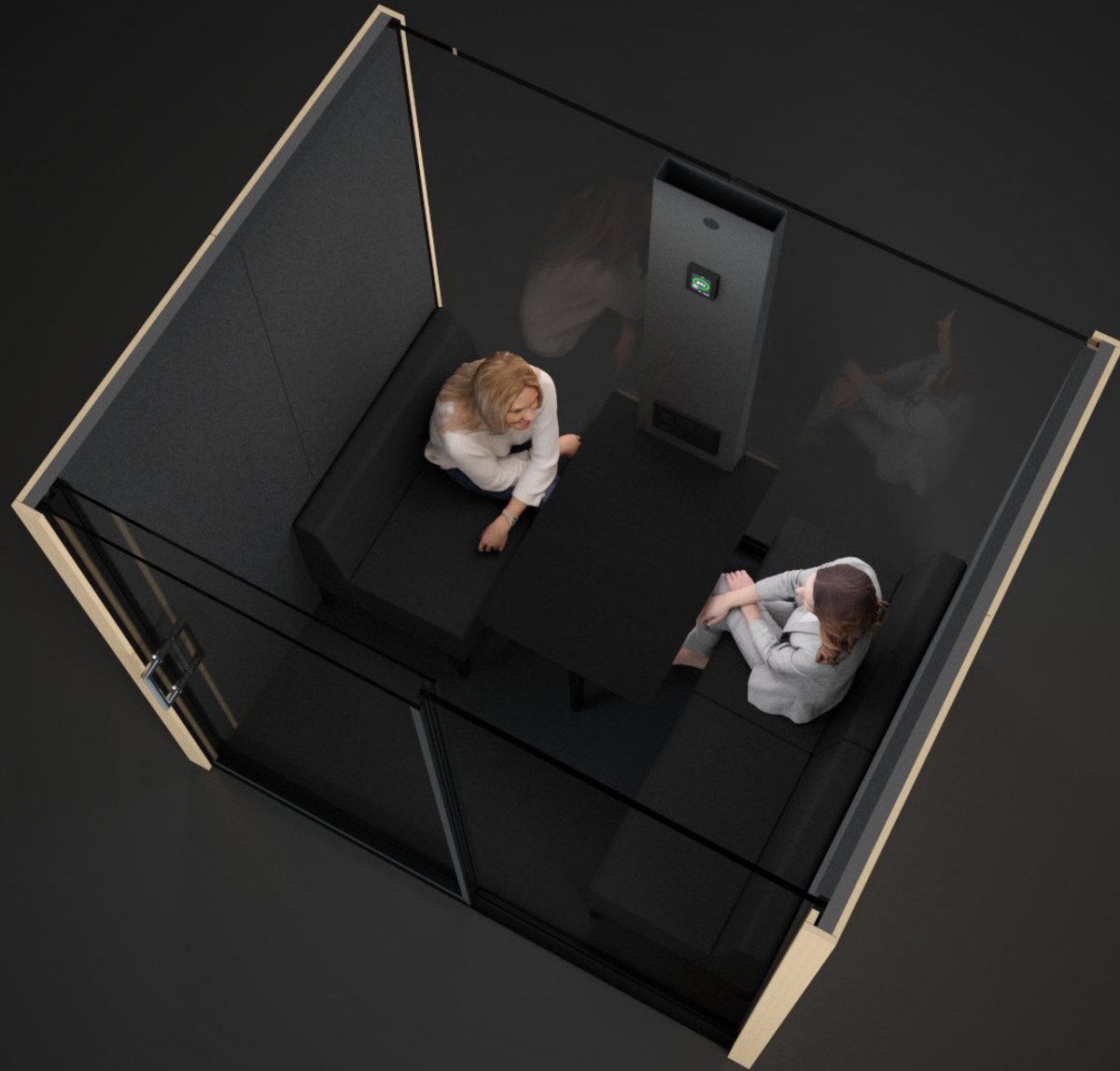


RAL 9004  
Black

Ask for custom finish options from your seller.







# The world's most productive spaces.

## Vetrospace Ltd

### Office and factory

Otto Korhosen Katu 1  
20660 Littoinen  
Finland

### Contact:

+358 400 300 772  
info@vetrospace.com  
www.vetrospace.com

Showroom Helsinki  
Tyynenmerenkatu 5  
00220 Helsinki  
Finland

Showroom New York  
Bisley North America  
1140 Broadway Suite 902  
10001, New York, USA

Showroom London  
Bisley  
32 Dallington Street  
EC1V 0BB, London, UK

